



**MANUFACTURER & EXPORTER OF
INDUSTRIAL EQUIPMENTS**

HAWK METALS

Complete Piping Solutions

ISO CERTIFIED 9001: 2015



**We're committed to
delivering exceptional
customer care. With
outstanding quality and
service, you can always
expect complete
satisfaction.**



Contact Us

+91-6363488688
+91-7081117167 /
+91-9005700528

Email Us

info@hawkmetalsind.com
sales@hawkmetalsind.com
hawkmetals8@gmail.com

Visit Our Website

www.hawkmetalsind.com
www.hawkmetalsco.com

■ About Company

HAWK METALS, established in **2020**, is a renowned company specializing in the manufacturing, supply, and export of a diverse range of commercial goods. Under the expert guidance of our Proprietor, **Mr. Mohamed Akmal Pasha**, who brings extensive industry experience, we have achieved remarkable success. Mr. Khan prioritizes customer satisfaction by consistently delivering high-quality, user-friendly products.



■ Introduction

HAWK METALS is a top manufacturer and stockholder of industrial valves, pipes, and fittings for Oil, Gas, Petrochemical, and Nuclear industries, specializing in control, ball, and custom valves in premium metals.

■ Our Vision And Mission

We assist customers in developing their energy resources by delivering world-class expertise locally. Our commercial solutions are tailored to meet the specific needs of our customers.

Offer technically robust solutions and generate added value in mutual interest with our customers, establishing ourselves as the preferred Stockists & Suppliers within the industry.



■ What We Do?

HAWK METALS is a Leading Manufacturer, extensive Stockholder of valves, pipes & tubes, flanges, buttwelded fittings, and other piping products for the Oil, Gas, Petrochemical and Nuclear Industries.

HAWK METALS is the Manufacturer of Control, Ball, Butterfly, Gate, Globe, Needle, Pinch, Orifice, Safety, Trunnion Mounted Ball Valve and other high quality industrial valves in Materials like Stainless Steel, Carbon Steel, Alloy Steel, Duplex & Super Duplex Steel, Nickel Alloys etc. We also manufacture and supply non-standard items in any material as per customer's specifications.



■ Our Services

01

Fabrication :

Describe the process and techniques involved in pipe and pipe fittings fabrication, focusing on materials, methods, tools, and quality control measures to ensure efficient and durable piping systems.

02

Transport & Logistics :

Discuss the latest advancements in transport and logistics. How are new technologies and innovative practices shaping the industry, improving efficiency, reducing costs, and enhancing sustainability? Provide real-world examples.

03

Import & Export :

Discuss the importance of import and export in global trade. How do they impact a country's economy, influence international relations, and affect local industries and consumers?



- We are committed to continuously upgrading our knowledge and skills to improve the efficiency of our organisation and to strive for outstanding quality of our products.
- We assure quality of our products by satisfying the customer's requirements and by perfecting our systems and procedures through involvement of our employees.
- We promise to deliver: Quality service at the most reasonable price, at the right time, and the right place.





BUTT WELD/SOCKET WELD/THREADED FITTINGS FLANGES & FASTENERS

- This is to introduce ourselves as the most reliable outsourcing partners for manufacturing of buttwelding pipe fittings, socket weld, pipe fittings, flanges & tubular components in all kinds of steel. Our panel of experienced manufacturers ensures excellent quality fittings meeting exact standards of National & International quality.
- These Pipe Fitting are manufactured from ferrous metals such as Carbon Steel, Alloy Steel, Low Temperature Carbon Steel & Stainless Steel. Both Seamless and E.R.W. Pipe Fittings are Produced by our special manufacturing process involving either hot or cold forming. We are fully capable of manufacturing Pipe fittings made to customer's specifications in terms of type, dimensions, material & quantity under any third party inspection.
- These Pipe Fittings are perfectly round, rugged, leak proof, corrosion resistant (Where ever required), meeting all the requirements to ASA/ASTM/BS/DIN/ISI codes. These quality fittings extend the life of piping systems, facilitate direct pipe welding, permit compact installations & reduce the space necessary for installing a piping network.

FACILITIES:

- SS PIPES & TUBES
- SS PIPE FITTINGS
- INDUSTRIAL VALVES
- SS ROUND BARS
- SS SHEET/PLATES/COILS
- CS PIPES & TUBES
- CS PIPE FITTINGS
- FLANGES
- PVC / CPVC / UPVC
- INSTRUMENTATION & HYDRAULIC FITTINGS
- PRESSURE & TEMPERATURE GAUGES
- GROOVED & ACCESSORIES
- GASKETS KITS & PACKINGS
- TEST PLUGS
- RUPTURE DISC
- INSULATION KITS
- STRAINERS
- EXPANSION JOINTS
- FORGED FITTINGS
- BUTTWELD FITTINGS
- FASTENERS & U-BOLTS
- FLOWMETERS / ROTAMETERS
- FRP / GRP PIPES & PIPE FITTINGS
- PTFE / PFA / FEP / PVDF / HDPE LINED PRODUCTS
- SAFETY INDUSTRIAL EQUIPMENTS
- MESH / STAINLESS STEEL HOSE
- PTFE / TEFLON PRODUCTS
- HDPE PIPE FITTINGS
- SS SHIM
- SS TAGS / CABLE TIE





PIPES & TUBES

Stainless Steel: ASTM A312 TP 304/304L/304H/316/316L/316H/317/317L/321/321H/310/347/347H/904L etc.

Carbon Steel: ASTM A53 GR. B/A106 GR. B/API 5L GR. B/API 5L GR. X42/46/52/56/60/65/70/A333 GR. 3/ GR. 6 etc.

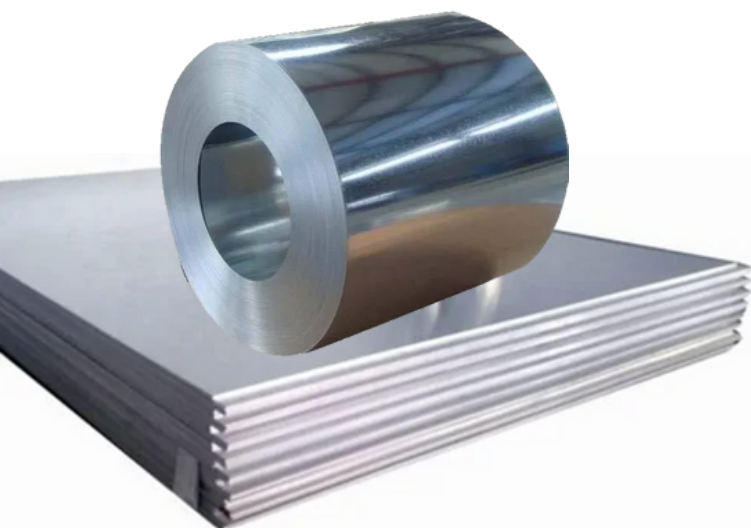
Alloy Steel: ASTM A335 GR. P1/P5/P9/P11/P22/P91 etc.

Others: Duplex, Super Duplex, Inconel, Monel Hastelloy, Nickel, Alloy 20, 254 SMO, Copper, Brass, Bronze, Titanium, Tantalum, Bismuth, Aluminium, High Speed Steel, Zinc, Lead, etc.

Types: Round, Square, Rectangular.

Size: Upto 24" NB. (Seamless & Welded)

Wall Thickness: Sch. 5S to Sch. XXS



SHEET, PLATE, COILS & BARS

Stainless Steel: ASTM A312 TP 304/304L/304H/316/316L/316H/317/317L/321/321H/310/347/347H/904L etc.

Carbon Steel: ASTM A53 GR. B/A106 GR.B/API 5L GR.B/API 5L GR.X42/46/52/56/60/65/70/A333 GR.3/GR. 6 etc.

Alloy Steel: ASTM A335 GR. P1/P5/P9/P11/P22/P91 etc.

Others: Duplex, Super Duplex, Inconel, Monel Hastelloy, Nickel, Alloy 20, 254 SMO, Copper, Brass, Bronze, Titanium, Tantalum, Bismuth, Aluminium, High Speed Steel, Zinc, Lead, etc.

Types: Sheet, Plate, Coil, Shims

Size: 1mm to 100mm

ROD, BARS & WIRES

Stainless Steel: ASTM A 479 Gr 304/304L/304H/316/316L/316Ti/317/317L/321/309/310/347/409/410/416/420/430/431/904L/En57, etc.

High Nickel Alloy: Nickel, Monel, Inconel, Hastelloy, Alloy20, Incoloy, Duplex & Super Duplex, Titanium, 5M06-254, Carbon Steel, Alloy Steel, Copper, Brass, Cupro Nickel, Aluminium, Zinc, Lead, 17.4PH, 440C etc.

Types: Round, Square, Bars, Wires, Filler Wire, Hex, Welding Electrodes, etc.





BUTTWELD FITTINGS

Stainless Steel: ASTM A312 TP 304/304L/304H/316/316L/316H/317/317L/321/321H/310/347/347H/904L etc.

Carbon Steel: ASTM A234 WPB/A420 WPL3/A420 WPL6/ MSS-SP-75 WPHY42/46/52/56/60/65/70

Alloy Steel: ASTM A234 WP1/WP5/WP9/WP11/WP22 WP91/AISI 4130/AISI 4140

Others: Duplex, Super Duplex, Inconel, Monel Hastelloy, Nickel, Alloy 20, 254 SMO, Copper, Brass, Bronze, Titanium, Tantalum, Bismuth, Aluminium, High Speed Steel, Zinc, Lead, etc.

Types: Elbow, Tee, Reducer, Return Bends, Stub-Ends, Cap, Collar, Cross, Insert etc.

Size: 1/4" NB TO 32" NB. (Seamless & Welded)

Wall Thickness: Sch. 5S To Sch. XXS.



FORGED FITTINGS

Stainless Steel: ASTM A312 TP 304/304L/304H/316/316L/316H/317/317L/321/321H/310/347/347H/904L etc.

Carbon Steel: ASTM A105/A 350 LF2, etc.

Alloy Steel: ASTM A182 F1/F5/F9/F11/F22/F91/AISI 4130/ AISI 4140

Others: Duplex, Super Duplex, Inconel, Monel Hastelloy, Nickel, Alloy 20, 254 SMO, Copper, Brass, Bronze, Titanium, Tantalum, Bismuth, Aluminium, High Speed Steel, Zinc, Lead, etc.

Types: Elbow, Tee, Union, Cross, Coupling, Cap, Bushing, Plug, Swage Nipple, Welding Boss, Hexagon Nipple, Barrel Nipple, Welding Nipple, Parallel Nipple, Street Elbow, Hexagon Nut, Hose Nipple, Bend, Adapter, Insert, Weldolet, Elbolet, Sockolet, Thredolet, Nipolet, Latrolet, etc.

Size: 1/4" NB TO 4" NB. (Socketweld & Threaded)

Class: 3000#, 6000#, 9000#.

FLANGES

Stainless Steel: ASTM A312 TP 304/304L/ 304H/ 316/ 316L/316H/317/317L/321/321H/310/347/347H/904L etc.

Carbon Steel: ASTM A105/A350 LF2, etc.

Alloy Steel: ASTM A182 F1/F5/F9/F11/F22/F91/AISI 4130/ AISI 4140

Others: Duplex, Super Duplex, Monel, Nickel, Inconel, Hastelloy, Copper, Brass, Bronze, Titanium, Tantalum, Bismuth, Aluminium, High Speed Steel, Zinc, Lead, etc. Types: Weldneck, Slipon, Blind, Socket Weld, Lap Joint, Spectacles, Ring Joint, Oriface, Long Weldneck, Deck Flange, etc.

Size: 1/2" NB TO 24" NB.

Class: 150#,300#,400#,600#,900#,1500# & 2500#.





FASTENERS / U-BOLT

Stainless Steel: AISI 304, 304L, 316, 316L, 310, 317, 317L, 321, 347, 410, 420, 904L etc.

Alloy Steel: 4.6, 5.6, 6.6, 8.8, 10.9 & 12.9/'R', 'S', 'T' Conditions.

Carbon Steel: Bare Condition, Galvanized, Phosphetised, Cadmium Plated, Hot Deep Galvanized, Bloodied, Nickel Chrome Plated, etc.

Non Ferrous Metal: Copper, Brass, Aluminium, Titanium, Nichrome, Al.Bronze Phosphorous Bronze, etc.

Types: Bolts, Nuts, Washers, Anchor Fasteners, Stud Bolts, Eye Bolt, Stud, Threaded Rod, Cotter Pin, Socket Head Screw,, Fine Fasteners & Spares, Foundation, Fasteners, etc.



INDUSTRIAL VALVES

Stainless Steel: AISI 304, 304L, 316, 316L, 310, 317, 317L, 321, 347, 904L etc.

Carbon Steel: A105, A216, Gr. WCB, Cadmium Plated, Nickel, chrome Plated etc.

Non-Ferrous Metal: Copper, Brass, Titanium, Phosphorous Bronze etc.

Type: Ball Valve, Gate Valve, Check Valve, Needle Valve, Mini Valve, Gauge Rott Valve, Globe Valve, Manifolds (2 Way, 3 Way, 5 Way)

Copper, Brass, Aluminium, Coils, Sheets, Plates, Flats, Pipes, Rods

Copper: DHP Copper, ETP Copper, DPA Copper, OFHC Copper Tubes, 2mm OD to 200mm OD with wall thickness of 0.10mm to 15mm.

Brass: 63/37 Brass, 70/30, Brass, Admitalty Brass, Aluminium & Other Composition of Brass.

Cupronickel: 95/5 Alloy & 70/30 Alloy

Bronze: Phoperous Bronze A B1/B2, Aluminium Bronze & Gun Metal

IS Grade: Aluminium

19501, 19500, 19600, 19800, 19000, 24345, 24354, 31000, 43000, 46000, 51000, 52000, 53000, 54300, 55000, 65032, 63400, 644300, 62400, 63401, 74530 etc. Available in all size & Thickness.



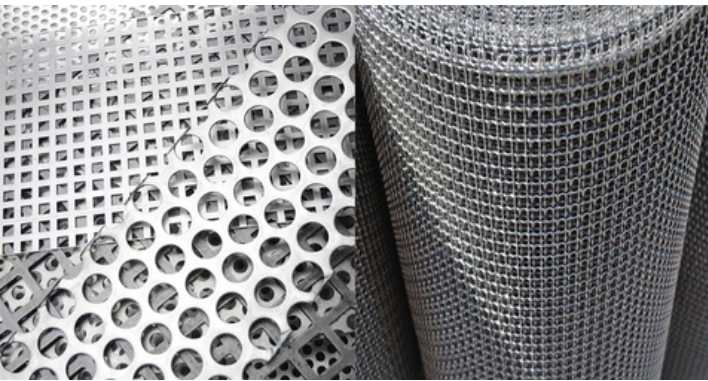


FLATS, ANGLE & CHANNEL

Stainless Steel: SA 240 TP 202/304/304L/316/316L/321/309/ 310/347/409/410/430/904L, etc.

Others: Nickel, Monel, Inconel, Hastelloy, Alloy20, Incoloy, Duplex & Super Duplex, 5M06-254, Carbon Steel, Alloy Steel, Copper, Brass, Cupro Nickel, Aluminium, Titanium, etc.,

Types: Available in All Sizes & Thickness



PERFORATED SHEET & WIREMESH

Stainless Steel: AISI 202, 304, 304L, 316, 316L, 310, 317, 317L, 321, 347, 904L etc.

Material: Mild steel, Stainless steel, Aluminum, CRC, Teflon, Brass, Copper, Synthetic Materials and HDPE

Type: Holes - Round, square and capsule

Hole pattern: Triangular and staggered

PVC / CPVC / UPVC

Product Range

- Pipes: 75mm, 90mm, 110mm & 160mm
- Type A - With yellow seal rubber ring pipes for waste water discharge
- Fittings - 75mm, 90mm & 110mm

Application

- Inside & outside drainage fittings of commercial, industrial public, utilities & buildings.
- For rain water discharges

Advantages

- Fast & easy installation with push fit system
- Cost effective - No solvent cement requires for joints
- Leak proof joints with high flow rate
- No choking
- Easy cleaning of system





PRESSURE & TEMPERATURE GAUGES

Pressure gauges are often liquid filled. This protects the internal mechanism against damage from severe vibration and to keep out the ambient corrosives and condensation. It is common practice to ensure the gauge is fitted with a gauge cock to assist when calibration or maintenance is required. When used on a steam system, gauges must be protected from heat by the use of a syphon tube. The two most common forms of syphon tube are the 'U' and ring types. The ring tube is used on horizontal pipelines where there is sufficient space above the pipe, and the 'U' type is used when mounting the gauge on a vertical pipeline or where space is limited.



FLOWMETERS / ROTAMETERS

Conductivity	20 $\mu\text{s} / \text{cm}$ (minimum)	Material	
Accuracy	$\pm 0.5\%$ of measured value (Typical)	Body	SS316
Flow velocity	1 to 10m ³ /s	Measuring tube	SS316
Display	7 segment LCD with backlit	Electrodes	SS316, Hastelloy, Titanium
Temperature	Max 160°C (as per lining material)	Grounding ring	SS316
Pressure	Max 20 bar	Liners	Hard Rubber, PTFE, PFA, Neoprene
Line size	1" to 4"	Output	4-20mA, Pulse and Relay output
Process connection	Flange type Tri-clover type Sandwich type	Communication	Modbus, HART (Optional)
		Power supply	24V DC / 230 V AC
		Transmitter housing design	Integral mount & remote mount

MECHANICAL	
Meter size	DN25 to DN80
Process connection	Standard : Flange Type Optional : Threaded, Tri-Clamp type
Flowmeter body MOC	Standard : SS316 / SS316L Optional : SS304, SS304L
OUTPUT	
Flow output	4-20mA, isolated
Load resistance (Transmitter)	600 Ohm
Communication	a) RS485/Modbus RTU b) HART
Measured parameters	Flow, Velocity, Totalizer
POWER	
Supply	24 V DC
Power consumption	0.2



TUBE & PIPE FITTINGS

We design and produce tube fittings have been designed specifically for several application including Petroleum and Chemical Manufacturing Industries. These are usually used in Instrumentation, Process and Control.



- Male Branch Tee
- Bulkhead Male Connector
- Bulkhead Female Connector
- Bulkhead Union
- Female Adapter
- Male Connector
- Male Pipe Weld Connector
- Male Elbow
- Male Adapter
- Male Run Tee
- Female Connector
- Female Elbow
- Female Run Tee
- Female Branch Tee
- Union
- Union Tee
- Union Cross
- Union Cross
- Union Cross
- Union Cross
- Reducer



FRP / GRP PIPES & PIPE FITTINGS

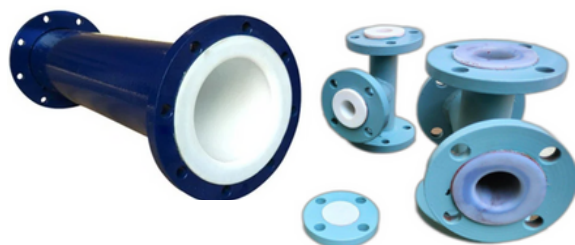
FRP/GRP pipes and fittings are now widely accepted in industries like chemical, petroleum, gas, and water transport. They outperform conventional materials like ductile iron and PVC due to their corrosion resistance and long lifespan. These pipes, with diameters ranging from 200 mm to 2600 mm and pressure capacities up to 30 bars, excel in desalination, power plants, and harsh environments due to their durability, high-temperature tolerance, and versatility in installation, whether above-ground, underground, or underwater. Their superior performance in extreme conditions makes them highly competitive compared to other piping materials.



Light Weight: FRP/GRP pipes and fittings weigh just 25% of similar steel pipes and 10% of equivalent concrete products. Their light weight enables easier handling, faster installation, and reduced transportation costs, minimizing the need for heavy equipment.

Corrosion Resistance: FRP/GRP piping systems resist corrosion both internally and externally. They effectively handle dilute acids, brine, organic solvents, and other corrosive chemicals without corrosion, eliminating the need for additional linings or exterior coatings.

PTFE / PFA / FEP / PVDF / HDPE LINED PRODUCTS



PTFE-lined products, including pipes, fittings, valves, and vessels, feature an internal layer of PTFE, a highly resistant fluoropolymer. Renowned for its excellent chemical resistance, non-stick properties, and high-temperature durability, PTFE lining prevents corrosion, reduces friction, and extends product lifespan, ensuring safe and efficient fluid handling in highly corrosive environments.

Liner type	Specification	Properties
Virgin PTFE paste extruded	ASTM D4895	Minimum Tensile Strength : 20.7MPa Minimum Elongation of break : 200 to 300 % Specific Gravity : 2.14-2.18 (when tested to ASTM D792 or D1505)
Static dissipating PTFE Paste Extruded	ASTM D4895	Minimum Tensile Strength : 20.7MPa Minimum Elongation of break : 200 to 300 % Specific Gravity : 2.14-2.18 (when tested to ASTM D792 or D1505)
Virgin FEP	ASTM D 2116	Minimum Tensile Strength : 20.7 MPa Minimum Elongation of break : 250% Specific gravity : 2.18
Virgin PFA	ASTM D3307	Minimum Tensile Strength : 26.2 MPa Minimum Elongation of break : 300% Specific Gravity : 2.12 – 2.17 (when tested to ASTM D792 or D1505) Melt flow rate : 1-2.5 g/10mins (when tested to ASTM D3307 at 3720 C)
Static Dissipating PFA	ASTM D3307	Minimum Tensile Strength : 26.2 MPa Minimum Elongation of break : 300% Specific Gravity : 2.14-2.17 (when tested to ASTM D792 or D1505) Melt flow rate : 1-2.5 g/10mins (when tested to ASTM D3307 at 3720 C)



SAFETY INDUSTRIAL QUIPMENTS

Some common types of industrial safety equipment include:

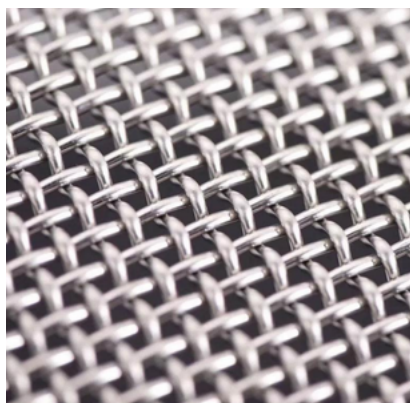
Personal Protective Equipment (PPE): This includes items such as helmets, safety glasses, goggles, earplugs or earmuffs, gloves, safety shoes, and protective clothing. PPE is designed to provide a physical barrier between the worker and potential hazards, such as falling objects, sharp objects, chemical splashes, or excessive noise.

- **Respiratory Protection:** This includes face masks, respirators, or self-contained breathing apparatus (SCBA) that protect workers from inhaling harmful gases, fumes, dust, or airborne particles.
- **Fall Protection Equipment:** This includes safety harnesses, lanyards, lifelines, guardrails, and safety nets that prevent workers from falling from heights or into deep pits.
- **Fire Protection Equipment:** This includes fire extinguishers, fire blankets, sprinkler systems, and fire alarms, which are crucial in preventing and controlling fires in industrial settings.
- **Machine Guards:** These are physical barriers or protective covers that are installed on machinery to prevent access to moving parts or hazardous areas, reducing the risk of injuries or amputations.
- **Safety Signs and Labels:** These include warning signs, caution signs, safety instructions, and labels that provide visual cues and essential information to workers regarding potential hazards or safety precautions.

Industrial safety equipment is essential to ensure the well-being of workers, prevent accidents, and maintain compliance with safety regulations. Implementing and using appropriate safety equipment promotes a safe working environment and reduces the risks associated with industrial operations.



MESH STAINLESS STEEL



Key Features :

High Durability: Our woven wire mesh is made from high-quality metals, ensuring long-lasting durability even in demanding environments.

Versatility: Available in various materials, including stainless steel, galvanized steel, and other alloys, to suit different applications and requirements.

Precision Weaving: Manufactured using advanced weaving techniques to ensure uniformity and precision in mesh openings and overall structure.

Corrosion Resistance: Our woven wire mesh is designed to resist corrosion, making it ideal for use in harsh or outdoor environments.

Customizable: Available in a wide range of mesh sizes, wire diameters, and weave patterns to meet specific needs.



VIBRATING
SCREEN

PERFORATED
SHEET

SQUARE MESH

CHAINLINK
FENCING

HEX WIRE
NETTING

INDUSTRIAL
HEAVY SCREEN

WELDED METAL
MESH

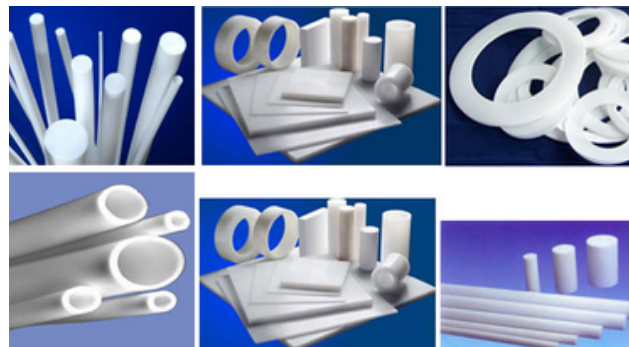
EXPANDED METAL
MESH

CRIMPED WIRE
MESH



PTFE / TEFLON PRODUCTS

Teflon products are made from polytetrafluoroethylene (PTFE), a synthetic fluoropolymer known for its non-stick, heat-resistant, and chemically inert properties. Common Teflon products include non-stick cookware, gaskets, seals, tapes, and industrial coatings. They are widely used in various industries due to their ability to resist corrosion, extreme temperatures, and friction. Teflon's non-reactive surface makes it ideal for applications involving aggressive chemicals, electrical insulation, or where non-stick characteristics are required. Its versatility and durability make Teflon products popular in both household and industrial environments.



HDPE PIPE & FITTINGS

HDPE (High Density Poly Ethylene) pipes and fitting are available in complete range from 20 to 450 mm size. The pipes are available in PN 2.5 to PN 16 pressure class in PE 63, PE 80 and PE 100 grades. HDPE pipes are manufactured according to IS: 4984.

SPECIFICATION

PRODUCT NAME : HDPE PIPE FITTINGS

SIZE : 32 MM TO 600 MM

PRESSURE : PN 2.5 TO PN16

MATERIAL GRADE : HDPE, PE100, PE80, PE63 GRADES

BIS STANDARD : ISO:4427 ISO:9001:2015

SS SHIMS

SS (stainless steel) shims are thin, precisely manufactured pieces of stainless steel used for a variety of applications in industries such as manufacturing, construction, and automotive. Their primary purpose is to fill gaps, provide accurate spacing, and align or level components. SS shims are highly valued for their corrosion resistance, strength, and durability, making them suitable for harsh environments, heavy machinery, and precision assemblies. Common applications include machinery alignment, structural leveling, vibration control, and providing support or reinforcement in mechanical assemblies or engineering projects.

MATERIAL: STAINLESS STEEL, BRASS, COPPER, M.S

THICKNESS: 0.05,0.10,0.20,0.50,1.00,2.00,3.00,4.00,5.00 & 6.00 MM



- Made Of High Quality Stainless Steel (Grade 304/316/321), Allowing Re-use.
- Easy To Fit And To Remove
- Close Tolerances For Accurate Alignment
- Fully De-burred And Perfectly Flat.
- Pre Cut Shims Are Supplied In Packs Of 10 And Complete Kits Are Also Available.
- Each Shim Is Permanently Marked With The Respective Thickness For Quick And Easy Identification.
- All The Corners Are To Be Rounded Off To Suitable Radius Without Sharp Edges.
- Tough And High Hardness Shim Prevent Thickness Deformation.



SS CALBE TIE / TAGS

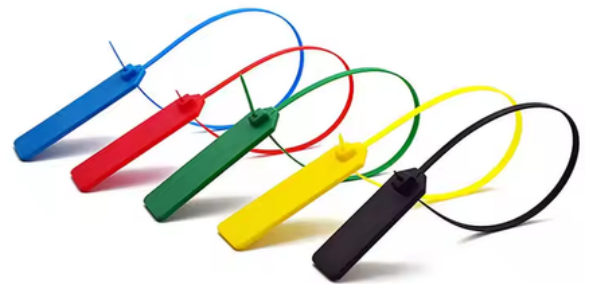
SS Cable Ties: Stainless steel (SS) cable ties are robust fastening solutions used to bundle and secure cables, hoses, or wires. Made from stainless steel, they offer excellent strength, durability, and resistance to corrosion, making them suitable for harsh environments and extreme temperatures. They come in various sizes and designs, including:

- Standard Cable Ties: Basic ties used for general bundling and securing tasks.
- Heavy-Duty Cable Ties: Designed for larger or more demanding applications requiring extra strength.
- Self-Locking Cable Ties: Feature a locking mechanism that holds the tie securely in place once tightened.
- Adjustable Cable Ties: Allow for adjustments in length after installation for flexible usage.

SS Tags: Stainless steel tags are durable identification tools used in various industries for labeling and organizing. Made from stainless steel, these tags are resistant to corrosion, weather, and physical wear. They are commonly used for:

- Asset Tagging: Identifying and tracking equipment, machinery, or inventory.
- Safety Labels: Marking safety instructions, warnings, or hazard information in industrial settings.
- Inspection Tags: Used for recording maintenance and inspection details on equipment.
- Identification Tags: For labeling cables, pipes, or other components in complex systems.

SS tags can be customized with engraving or stamping to provide clear, permanent information.



MISCELLANEOUS





PIPES / TUBES (SS)

Products : Duplex (S31803 / S32205 / F51), Super Duplex (S32750 / S32760/ 2507 / F53 / F55), 6% Moly (S31254 / F44), Nickel Alloys (400 / 625 / 825), Copper Nickel (cuNi 70/30, 90/10)

Products Seamless : Sch 10, 20, STD, 40, 80, 160 EFW/ ERW : Sch 10, 20, STD, 40

Standard : ASTM A312/ A358 TP 316/316L, TP 304L/304, 310, 321

PIPES / TUBES (MS-CS)

Products

Carbon steel-High Temperature
Seamless : Sch 10,20, STD 30, 40,
60, XS, 80, 160, XXS

Welded : Sch.10, 20, STD, 30,40, XS

Longitude / Spiral

Alloy Steel

Carbon Steel-Low Temperature
Seamless : Sch 20, STD, 40, 80.

Size Range

1/2"-2 4"

1/2"-2 4"

24" – 72"

1/4" – 16"

1/4" – 16"

Standard / Grade

ASTM – A53/ A 106/API 5L GR. A/B

ASTM – A 120, ASTM A252 GR2

API – X42, X52, X60, X65, X70,PSL1, PSL2

ASTM – A335 P5, P9, P11, P12, P22

ASTM – A333, A671 GR.3, GR.6

FLANGES

Manufacturer & supplier of all types of flanges such as Flat, Square, High Hub Blind, Groove & Tongue, RTJ, Spade and Ring Spacer for high quality Flange Connection.

Size	: 1/2" (15 NB) to 48" (1200NB)
Standards	: ANSI B16.5, ANSI B16.47 Series A & B, MSS SP44, ASA, API-605, AWWA, Custom Drawings
Pressure Ratings	: Class 150, Class 300, Class 400, Class 600, Class 900, Class1500, Class 2500 PN6, PN10, PN16, PN25, PN40, PN64 etc.
Carbon Steel Flanges/ forged Flange Flanges	: ASTM A105/A105N, A350 LF1, LF2 CL1/CL2, LF3 CL1/CL2, A694 F42, F46, F48, F50, F52, F56, F60, F65, F70, A516.60, 65, 70 (Spectacle Blind Flange, Spacer Ring/Spade Flange), Steel RST37.2, C22.8
Stainless Steel Flanges/ forged Flange Flanges	: ASTM A182 F202, F304/304L/304H, F316/316L, F316H, F316TI, F310, F321, F904L
Alloy Steel Flanges/ forged Flange Flanges	: ASTM A182 F1, F5, F9, F11, F22, F91
Special Alloy Flanges/ forged Flange Flanges	: Duplex, Super Duplex, Nickel Alloys
Flange Face Type	: Flate Face (FF), Raised Face (RF), Ring Type Joint (RTJ)
Coating/Surface Treatment	: Anti-rust Paint, Oil Black Paint, Yellow Transparent, Zinc Plated, Cold and Hot Dip Galvanized
Value Added Services	: CNC Machining, Customised Flanges



FITTINGS

Standard / Dimension

Description

ASME B16.9	:	Factory-made wrought steel butt-welding fittings
ASME B16.5	:	Pipe flanges and flanged fittings
ASME B16.11	:	Forged fittings socket-welding and threaded
ASME B16.47	:	Steel flanges
ASME B16.28	:	Wrought steel butt-welding short radius elbows and returns
MSS-SP-43	:	Wrought stainless steel butt-welding fittings
MSS-SP-44	:	Steel flanges
MSS-SP-75	:	Specification for high test wrought butt welding fittings
MSS-SP-79	:	Socket-welding reducer inserts
MSS-SP-83	:	Class 3000 steel pipe unions socket-welding and threaded
MSS-SP-95	:	Swage nipples and Circle plugs
MSS-SP-97	:	Integrally reinforced forged branch outlet fittings-socket welding, threaded and butt-welding ends

Nickel Alloy Butt Welding Fittings	:	ASTM / ASME SB 336 UNS 2200 (NICKEL 200) , UNS 2201 (NICKEL 201) , UNS 4400 (MONEL 400) , UNS 8020 (ALLOY 20 / 20 CB 3) , UNS 8825 INCONEL (825) , UNS 6600 (INCONEL 600) , UNS 6601 (INCONEL 601) , UNS 6625 (INCONEL 625) , UNS 10276 (HASTELLOY C 276)
---	---	--

COPPER Alloy Steel Butt Welding Fittings	:	ASTM / ASME SB 111 UNS NO.C 10100 , C 10200 , C 10300 , C 10800 , C 12000, C 12200, C 70600 , C 71500 ASTM / ASME SB 466 UNS NO.C 70600 (CU -NI- 90/10) , C 71500 (CU -NI- 70/30)
---	---	---

Stainless Steel Butt Welding Fittings	:	ASTM / ASME SA 403 GR WP "S" / "W" / " WX" 304 , 304L, 304H, 304N, 304LN, 309, 310H, 316, 316H, 317, 317L, 321, 321H, 347, 347 H
--	---	--

Duplex Steel Butt Welding Fittings	:	ASTM / ASME SA 815 UNS NO.S 31803, S 32205, S 32550, S 32750, S 32760
---	---	---

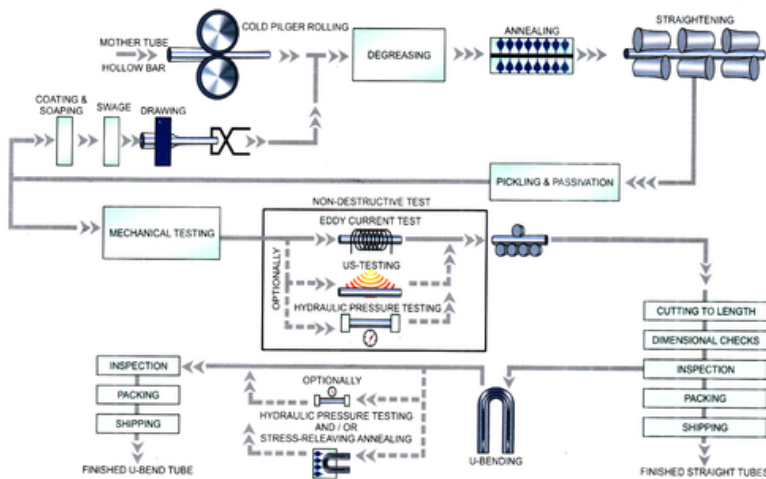
Carbon Steel Butt Welding Fittings	:	ASTM / ASME A 234 WPB, WPC ASTM / ASME A 860 WPHY 42, WPHY 46, WPHY 52, WPH 60, WPHY 65 & WPHY 70
---	---	---

Alloy Steel Butt Welding Fittings	:	ASTM / ASME A 234 WP 1, WP 5, WP 9, WP 11, WP 12, WP 22, WP 23, WP 91
--	---	---



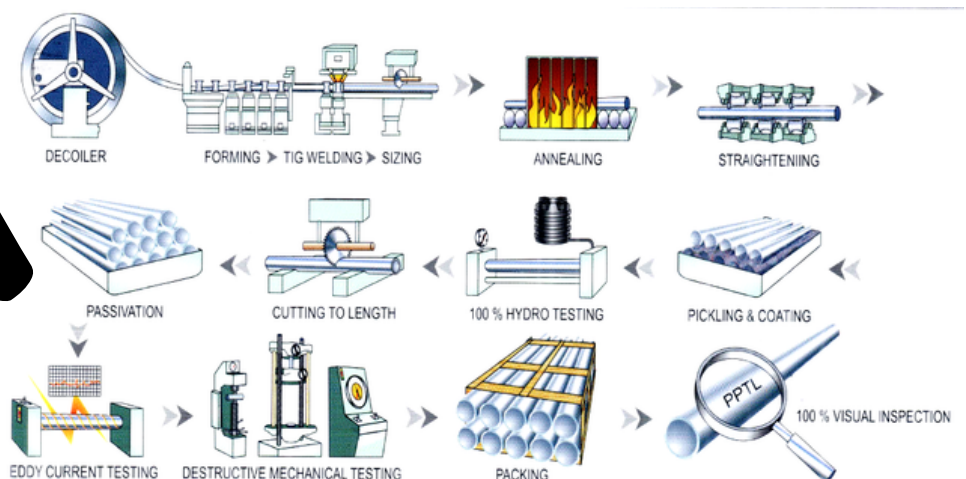
MATERIALS

MATERIAL	GRADE	MATERIAL	GRADE	
Stainless Steel	301 (S30100), 302HQ (S30430), 303 (S30300), 304 (S30400), 304L (S30403), 304H (S30409), 309S (S30908), 310 (S31000), 316 (S31600), 316L (S31603), 317L (S31703), 321 (S32100), 347 (S34700), 904L (N08904)	Mild Steel Pipe	: IS 1239, IS 3589 (Fe 330, Fe 410)	
	Nickel Alloy	201, 200	Galvanized Steel Pipe	: ASTM F1083
		400	Copper Nickel Pipe	: ASTM B466 90/10, 70/30, ASME SB552
	Monel	: 400	Duplex 2205 Pipe	: ASTM A790 UNS S32205
	Hastelloy	: B2, C22, C276	Super Duplex 2507 Pipe	: ASTM A790 UNS S32760, SA 789 UNS S32750
	Inconel	: 600, 625, 601, 718	Titanium	: ASTM-B862-99, ASTM-B861-00, ASTM-B381-00, ASTM-B363-00, ASTM-B348-00, ASTM-B338-99, ASTM B265-99
	Incoloy	: 800, 800H, 800HT, 825	Copper	: (ASTM B103, B139, B159), (ASTM B36, B134, B135), (ASTM 138), (ASTM B111), Cupronickel
	Carbon Steel	: ASTM A106, ASTM A53, ASTM A333, ASTM A691	Brass	: C22000, C23000, C26000, C27400, CZ108
	Alloy Steel	: ASTM A335 P5, ASTM A335 P9, ASTM A335 P11, ASTM A335 P22, ASTM A335 P91		



PROCESS FLOW CHART OF SEAMLESS PIPES

PROCESS FLOW CHART OF WELDED PIPES





By Road

01

Road logistics involves the planning, execution, and management of the transportation of goods and services via road networks. It is a critical aspect of supply chain management and encompasses various activities to ensure the efficient movement of products from origin to destination.



By Sea

02

Sea logistics involves the transportation of goods and materials over oceans and seas. This method is crucial for global trade, offering a cost-effective solution for moving large volumes of cargo. Key components include shipping lines, ports, and freight forwarders, ensuring efficient and timely delivery across international waters.



By Air

03

Air logistics is the intricate network of processes involved in the transportation of goods and materials via air carriers. With its speed and efficiency, air logistics plays a pivotal role in global trade, facilitating timely deliveries and connecting distant markets across the world.



“The company's commitment to quality, reliability, and timely delivery has helped it to establish a strong reputation in the market.”





Thank You!

Hopefully, we can work together and this project will be successful.

Let's Get In Touch

Contact Us

+91-6363488688
+91-7081117167 /
+91-9005700528

Email Us

info@hawkmetalsind.com
sales@hawkmetalsind.com
hawkmetals8@gmail.com

Visit Our Website

www.hawkmetalsind.com
www.hawkmetalsco.com



Approvals



Branches :

INDIA
Head Office

UNITED ARAB AMIRATES
For keeping stock for shutdown projects in GCC countries

BAHRAIN
For manufacturing unit and local export for GCC

Head-Office: C-36/204, Bharat Jyoti CHSL, Sector-11, Mira Road East, Thane-401107, Maharashtra, India.
Sales-Office: 12, Anand Ashram CHSL, Sector-11, Mira Road East, Thane-401107, Maharashtra, India
Plant Address: Ghaziabad, Uttar Pradesh, India